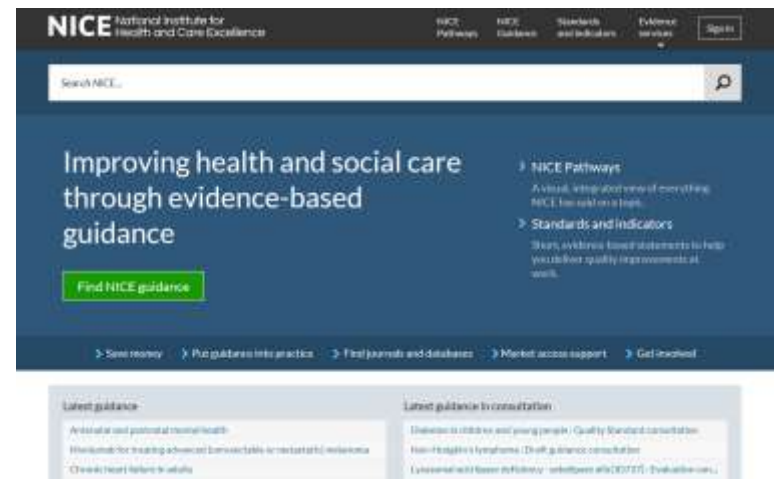


NICE National Institute for
Health and Care Excellence

NICE Quality
Standards and
commissioning
dementia care”

What is NICE?

- World leader in producing guidance and setting standards for high quality care and for promoting healthy living
- From April 2013 a remit for social care – renamed National Institute for Health and **Care** Excellence
- Evidence-based guidance and other products from NICE help resolve uncertainty about best quality care and what represents value for money



www.nice.org.uk

NICE produces national guidance covering

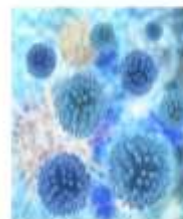
Health technologies:

- technology appraisals
- interventional procedures
- medical technologies

Guidelines and quality standards:

- clinical practice
- public health
- **social care topics**

Latest news headlines



People with HIV must receive earlier diagnoses

Ensuring that people with HIV receive earlier diagnoses will reduce transmission and prevent thousands of further cases, according to NICE.

25 June 2014



Spine-straightening device approved by NICE

A device that can straighten and lengthen curved spines in children, and reduce the need for repeat surgery, has been green-lit by NICE under new guidance.

25 June 2014



Novel oral anticoagulants an option for patients with atrial fibrillation

Offering patients anticoagulants could help prevent thousands of strokes and premature deaths from atrial fibrillation (AF), according to NICE.

25 June 2014



New video to support mental wellbeing of older people in care homes quality standard

A new film commissioned by the NICE collaborating centre for social care will help organisations and people use the quality standard on mental wellbeing of older people

NICE: setting national standards for high quality health and social care

NICE Products



1. Guidelines

‘Evidence based practice recommendations for health and social care’

2. Quality Standards

‘Concise sets of prioritised statements designed to drive measurable quality improvements within a particular area of health or care. ‘

3. Pathways

A visual, integrated view of everything NICE has said on a topic.

4. Technology appraisals

‘...recommendations on the use of new and existing medicines and treatments within the NHS.’

What do NICE Products do?

NICE Guidelines show:

- What 'good' looks like
- What works
- What is cost effective

NICE Quality Standards show:

- Priority areas for improvement
- Measures of performance

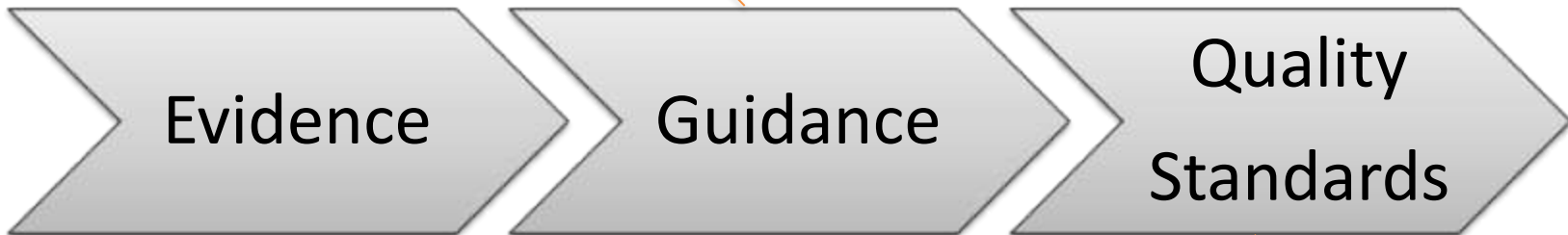
NICE tools and resources

- Provide further aides to commissioners/providers etc



Quality Standards

A comprehensive set of recommendations for a particular disease or condition



A prioritised set of concise, measurable statements designed to drive quality improvements across a pathway of care

How to use NICE quality standards

- Quality Standards can highlight key areas for improvement. An initial assessment should consider:
 - *relevance to the organisation*
 - *how services compare*
 - *what evidence is available*
 - *actions to improve*
 - *risks of not improving*

NICE and Dementia

- ***‘Dementia, disability and frailty in later life – mid-life approaches to delay or prevent onset’*** - NG16, Published date: 2015 & Pathway(online)
- ***‘Dementia: supporting people with dementia and their carers in health and social care’*** - CG42 Updated 2014
- ***Dementia Pathway*** - (online)
- ***‘Donepezil, galantamine, rivastigmine and memantine for the treatment of Alzheimer's disease’*** - NICE technology appraisal guidance - TA217 2011
- ***‘Dementia: support in health and social care’*** - NICE quality standard [QS1] Published date: June 2010
- ***‘Dementia: independence and wellbeing’*** - NICE quality standard [QS30] Published date: April 2013

NICE and Dementia

‘We are currently updating our guideline on Dementia: supporting people with dementia and their carers in health and social care (CG42). This update will incorporate the technology appraisal (TA) on Donepezil, galantamine, rivastigmine and memantine for the treatment of Alzheimer’s disease (TA217).’

– *NICE Website – Guidelines in development*



Quality Standards and Commissioning for Dementia

Dementia: support in health and social care - NICE quality standard [QS1], June 2010

Statement 1 - Staff training

Statement 2 - Referral to a memory assessment service.

Statement 3 - Written and verbal information to newly diagnosed people and their carers

Statement 4 - Assessment and an ongoing personalised care plan and care coordinator

Statement 5 - Advance decisions to refuse treatment

Statement 6 - Carers are offered an assessment and tailored interventions

Statement 7 – Assessment for behaviour that challenges

Statement 8 – Inpatients have access to a specialist liaison

Statement 9 – Assessment of palliative care needs.

Statement 10 - Respite/short-break services

Quality Standards and Commissioning for Dementia

Dementia: support in health and social care - NICE quality standard [QS1], June 2010 - Example

Statement 2: Memory assessment services

Quality measure

Structure: Evidence that services specialising in the diagnosis and initial management of dementia are the single point of referral for people with a possible diagnosis of dementia.

Process: Proportion of people with suspected dementia who are referred to a memory assessment service specialising in the diagnosis and initial management of dementia.

What the quality statement means for Commissioners

- **Commissioners** should ensure all referrers can access memory assessment services for people with a possible diagnosis of dementia.

Quality Standards and Commissioning for Dementia

Dementia: independence and wellbeing NICE quality standard [QS30], April 2013



Statement 1 - Discussing concerns about possible dementia

Statement 2 - Choice and control in decisions

Statement 3 - Reviewing needs and preferences

Statement 4 - Leisure activities of interest and choice

Statement 5 - Maintaining and developing relationships

Statement 6 - Physical and mental health and wellbeing

Statement 7 - Design and adaptation of housing

Statement 8 - Planning and evaluating services

Statement 9 - Independent advocacy

Statement 10 - Involvement and contribution to the community

Quality Standards and Commissioning for Dementia independence and wellbeing

NICE quality standard [**QS30**], April 2013



Quality measure

- **Structure:** Evidence of local arrangements to ensure that people with dementia are enabled..., to access services that help maintain their physical and mental health and wellbeing.

Outcome:

- Feedback from people and their carers ... that they are enabled to access services that help maintain physical and mental health and wellbeing.

What the quality statement means for Commissioners

- Ensure the services they commission enable people with dementia, with the involvement of their carers, to have routine check-ups of their physical and mental health and see healthcare professionals when they have concerns.

We provide a range of resources to help maximise uptake and use of evidence and guidance.

Into Practice Guide
Online learning resources
Clinical case scenarios
Local practice collection
NICE and BNF apps
Field team

Baseline assessment/ tools
Costing reports and templates
Medicines Information

The screenshot shows the NICE website interface for 'Managing medicines in care homes'. On the left is a navigation menu with options: Find guidance, Service delivery, organisation and staffing, Medicines management, Medicines management: general and other, Tools and resources (highlighted in blue), Evidence, History, and Documents. The main content area has a title 'Managing medicines in care homes' and a sub-header 'NICE guidelines [SC1] Published date: March 2014'. Below this, there are tabs for 'Guidance' and 'Tools and resources' (the latter is circled in red). The 'Tools and resources' section includes a 'Quick reference' box with links to 'Managing medicine in care homes pathway' and 'Recommendations', and a 'Managing medicines in care homes' box with a link to 'Managing medicines in care homes: case scenarios for health and social care staff'. There are also 'Share' and 'Print' buttons in the top right.

www.nice.org.uk/about/what-we-do/into-practice

Tailored resource for carers and care providers on supporting people to live well with dementia

- Key messages for each standard – *‘What does this mean for care providers?’*
- Key resources available from NICE and elsewhere

<https://www.nice.org.uk/About/NICE-communities/Social-care/Tailored-resources/Dementia>

NICE & Dementia - Summary

- Evidence-based – ‘What works’
- Guidance and Quality Standards on Dementia
- Quality Standards identify priority areas and measures of achievement
- Shows commissioners what to look for from providers and how they can be supported